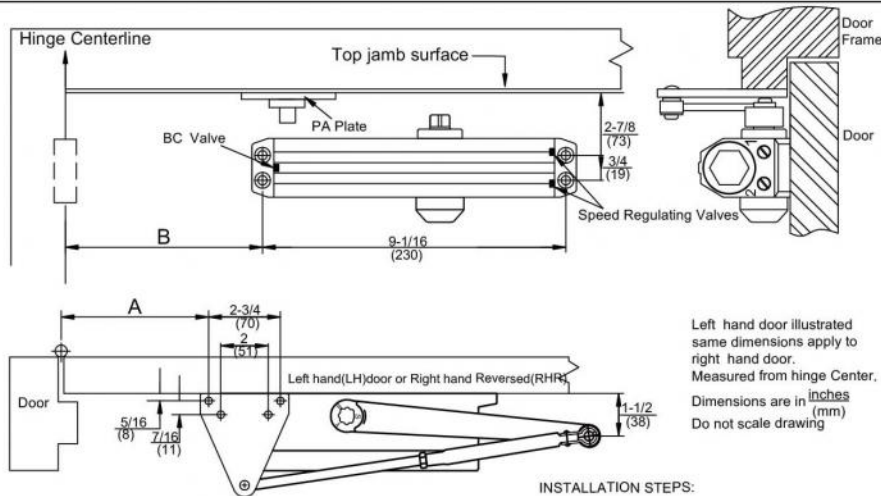


Lutér® PARALLEL ARM MOUNTING (PUSH SIDE)

INSTALLATION INSTRUCTIONS:



Left hand door illustrated same dimensions apply to right hand door. Measured from hinge center. Dimensions are in inches (mm) Do not scale drawing

Dimension Model No.	Dimension "A" Inch	Dimension "A" mm	Dimension "B" Inch	Dimension "B" mm	Opening Angle
D011	7-3/4	197	6-1/8	156	130°
	5-3/4	146	4-1/8	105	180°

INSTALLATION STEPS:

1. Select opening angle of the door. USE dimensions shown in table and illustration above to drill mounting holes on door frame and on the door.
2. Attach closer to door with speed regulating valves positioned away of the hinges side.
3. Attach PA plate to top jamb surface as shown.
4. Remove shoe from forearm as shown and discard it.
5. Rotate the bottom pinion about 45° towards the hinges and place the main arm on the top pinion to position as shown in the illustration. Fasten with arm screw.
6. Fasten forearm to PA plate.
7. Adjust forearm length to set the arm elbow about 1-1/2" (38mm) from door when connected to main arm.
8. USE washer and screw provided to secure pivot connection. Tighten locknut.
9. Snap pinion cap over spindle at bottom.
9. Adjust closer. (Same to Page 2)

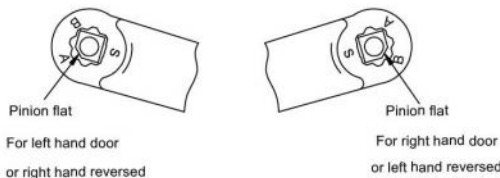


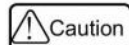
ILLUSTRATION Main arm positioning

Luter Door Closer D01115 POWER SIZE SETTING AND DOOR WIDTH

Regulating Arm & Top Jamb Installation				Parallel Arm Installation			
Maximum Size of Door							
Closer Size	Interior	Exterior Inswing	Exterior Outswing	Closer Size	Interior	Exterior Outswing	Full 360° Turns
1	28"	—	—	1	—	—	-4 Turns C.C.W
2	36"	—	—	2	30"	—	0 Turn
3	42"	30"	36"	3	36"	30"	4 Turns C.W
4	48"	36"	42"	4	42"	36"	12 Turns C.W

For D01114 size 1-4 power setting, please reference Page 1.

For D01115 size 1-5 power setting, please reference Page 4.



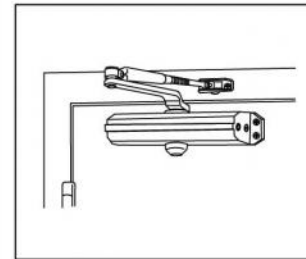
IMPROPER INSTALLATION OR ADJUSTMENT MAY RESULT IN PERSONAL INJURY OR PROPERTY DAMAGE. FOLLOW ALL INSTRUCTIONS CAREFULLY.

Lutér® D011 SERIES DOOR CLOSERS

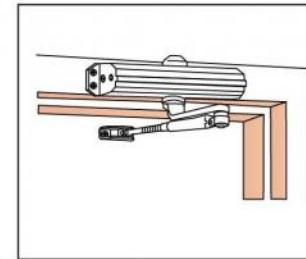
INSTALLATION INSTRUCTIONS

Model: D01114 Size 1-4 / D01115 SIZE 1-5

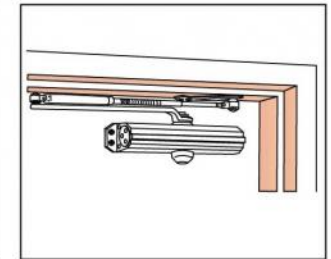
MOUNTING APPLICATIONS:



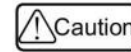
Regular Arm (Pull Side)



Top Jamb (Push Side)

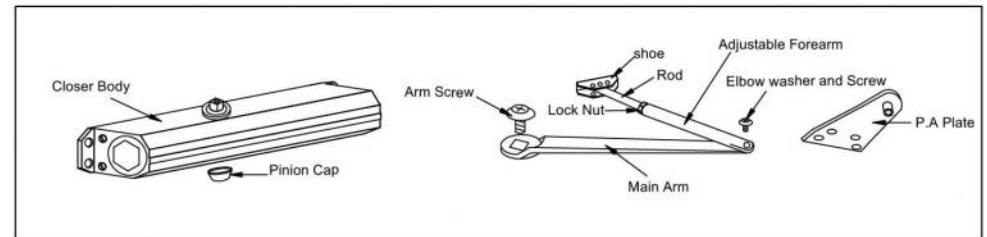


Parallel Arm (Push Side)

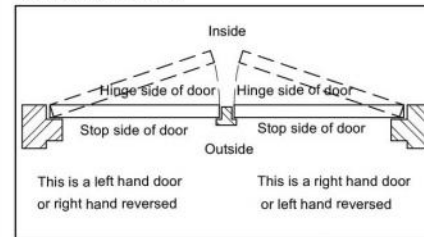


Improper installation and/or adjustment may result in personal injury or property damage. Follow all instructions carefully.

DOOR CLOSER ACCESSORIES/PARTS



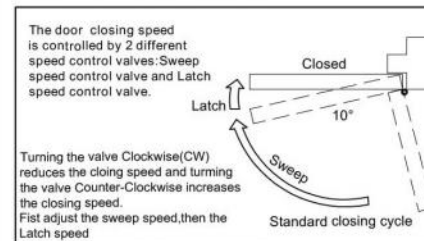
DOOR HANDING



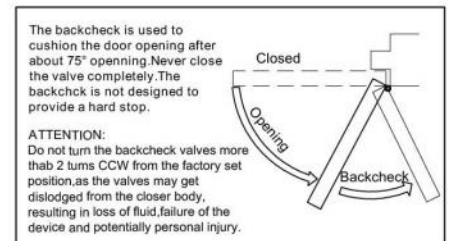
D01114 POWER SIZE SETTING AND DOOR WIDTH

Closer Size	Regulating Arm & Top Jamb Installation			Parallel Arm Installation			Full 360° Turns
	Interior	Exterior Inswing	Exterior Outswing	Closer Size	Interior	Exterior Outswing	
	Maximum Size of Door						
1	28"	—	—	1	—	—	-4 Turns C.C.W
2	36"	—	—	2	30"	—	0 Turn
3	42"	30"	36"	3	36"	30"	4 Turns C.W
4	48"	36"	42"	4	42"	36"	12 Turns C.W

DOOR CLOSING CONTROL



DOOR OPENING CONTROL

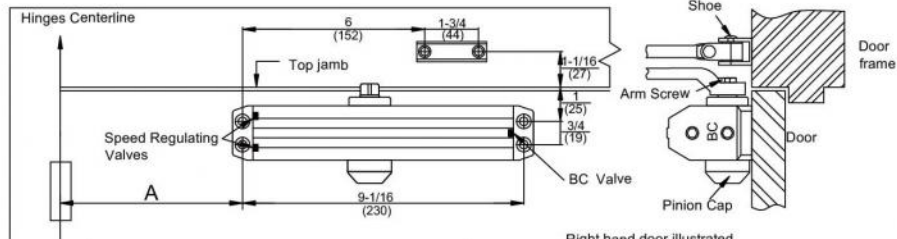


The backcheck is used to cushion the door opening after about 75° opening. Never close the valve completely. The backcheck is not designed to provide a hard stop.

ATTENTION: Do not turn the backcheck valves more than 2 turns CCW from the factory set position, as the valves may get dislodged from the closer body, resulting in loss of fluid, failure of the device and potentially personal injury.

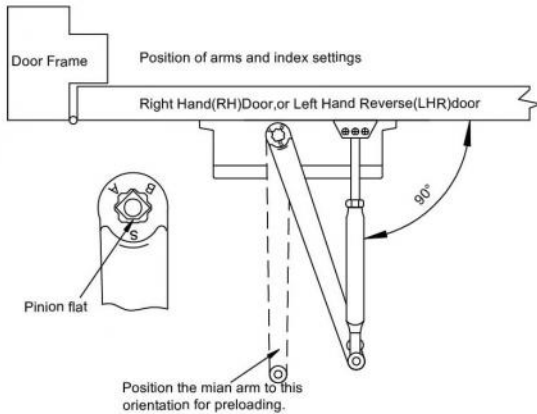
Lutér® REGULAR ARM(PULL SIDE)

INSTALLATION INSTRUCTIONS



Dimension Model No.:	Dimension*A"		Opening Angle
	Inch	mm	
D011	6	152	120°
	3-1/2	89	180°

Right hand door illustrated same dimensions apply to left hand door. Measured from hinge Center. Dimensions are in inches (mm) Do not scale drawing

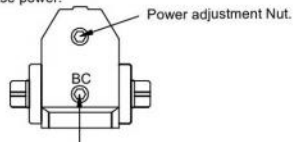


INSTALLATION STEPS:

1. Select opening angle of the door. Use dimensions as shown to drill mounting holes on door and door frame.
2. Attach the Lutér Door closer body to door with speed regulating valves toward the hinge.
3. Assemble main arm to closer top pinion shaft.
4. Attach the forearm shoe to the door frame.
5. Adjust length of the forearm to position forearm at right angle to the door leaf when connected to main arm at elbow. Use washer and screw provided to secure pivot connection. Tighten locknut on forearm.
6. Snap pinion cap over spindle at bottom of closer.
7. Adjust closer.

POWER SIZE AND BACK CHECK ADJUSTMENT

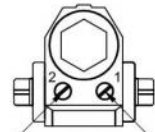
Adjust the spring power as chart in page 1. DO NOT exceed the maximum turns. The spring power has been reset on size 2 in factory. Turn this screw clockwise to increase or counter clockwise to decrease power.



Turn BC regulating valve clockwise for a harder cushion and counter-clockwise for a softer cushion. NEVER close this valve completely.

SWEEP AND LATCHING SPEED ADJUSTMENT

Turn speed regulating valve clockwise to slow down or counter clockwise to speed up door movement.

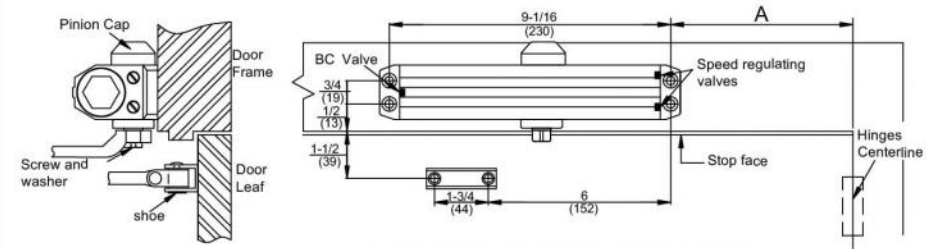


This valve controls latching speed

This valve controls sweep speed

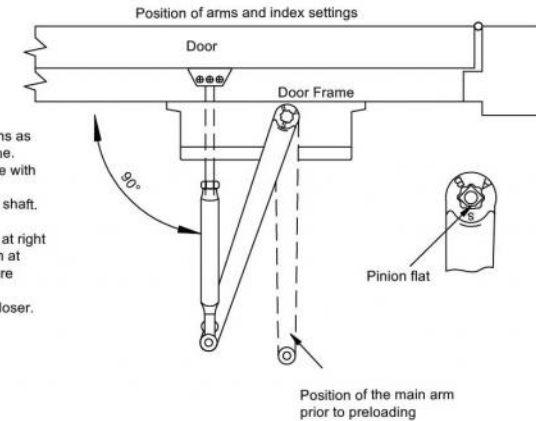
Lutér® TOP JAMB MOUNTING (PUSH SIDE)

INSTALLATION INSTRUCTIONS



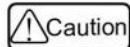
Dimension Model No.:	Dimension*A"		Opening Angle
	Inch	mm	
D011	6	152	120°
	3-1/2	89	180°

Right hand door illustrated same dimensions apply to left hand door. Measured from hinge Center. Dimensions are in inches (mm) Do not scale drawing



INSTALLATION STEPS:

1. Select opening angle of the door. Use dimensions as shown to drill mounting holes on door and frame.
2. Attach the Lutér Door closer body to door frame with speed regulating valves toward the hinges.
3. Assemble main arm to the closer bottom pinion shaft.
4. Attach the shoe and forearm to the door.
5. Adjust length of the forearm to position forearm at right angle to the frame when connected to main arm at elbow. Use washer and screw provided to secure pivot connection. Tighten locknut on forearm.
6. Snap pinion cap over spindle at bottom of the closer.
7. Adjust closer. (Same to Page 2)



IMPROPER INSTALLATION OR ADJUSTMENT MAY RESULT IN PERSONAL INJURY OR PROPERTY DAMAGE. FOLLOW ALL INSTRUCTIONS CAREFULLY.



IMPROPER INSTALLATION OR ADJUSTMENT MAY RESULT IN PERSONAL INJURY OR PROPERTY DAMAGE. FOLLOW ALL INSTRUCTIONS CAREFULLY.