

Lutér[®]

EURO MORTISE LOCK

Luter Enterprise Co., Ltd.

Aug, 2014

Sash Lock



Dead Lock



Latch Lock



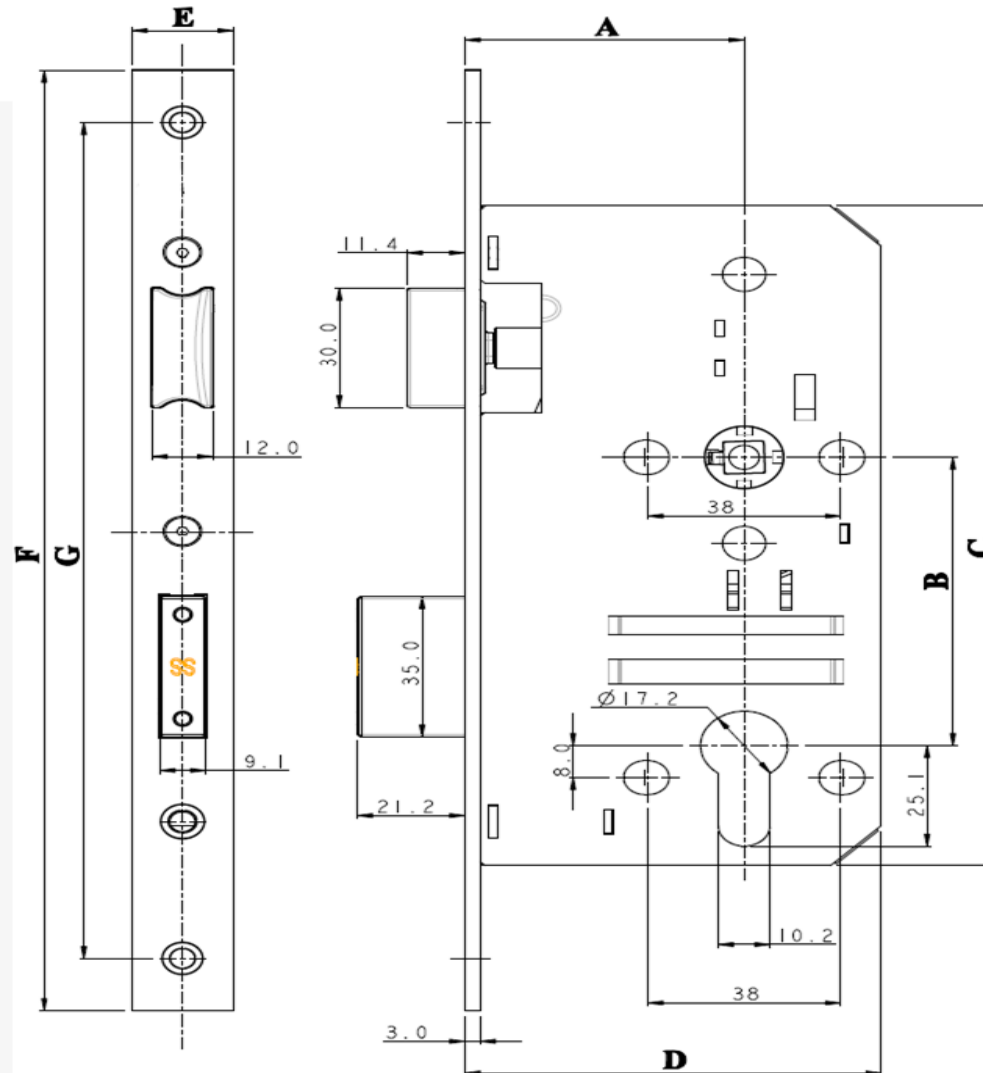
Privacy Lock

Features

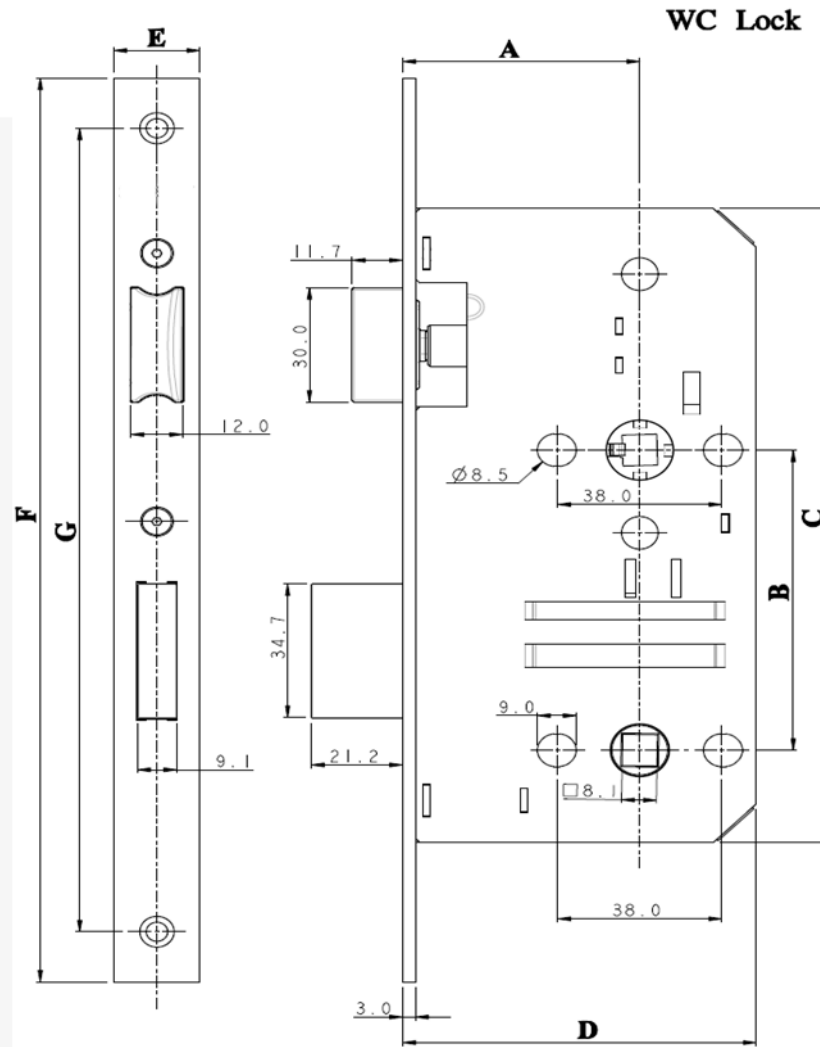
- Non-handed commercial mortise lock set
- Reversible latch bolt allows installation on either left or right handed doors
- Applicable to both wood & metal doors
- Dimensions measurement match DIN 18251
- Conforms to requirement (available for CE)
- Available in sash lock, latch lock, bathroom (WC) lock and deadbolt functions
- Available in either 20mm or 24mm stainless steel faceplate
- Anti-saw deadbolt is optional at SS material

Backset x CTC	Latch bolt	Dead bolt	A	B	C	D	E	F	G
55x72 Sash	Zinc/SS	Zinc/SS	55	72	165	82	20/ 24	235	209
55x-- Latch	Zinc/SS		55	72	165	82	20/ 24	235	209
55x-- Dead		Zinc/SS	55	72	165	82	20/ 24	235	209

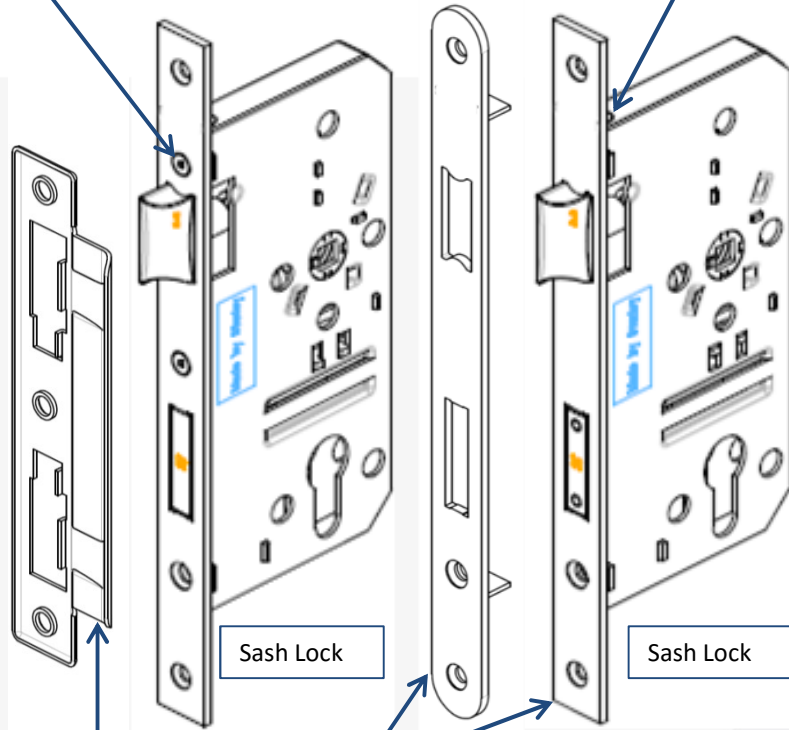
Sash Lock



Backset x CTC	Latch bolt	Dead bolt	A	B	C	D	E	F	G
55x78 WC	Zinc/SS	Zinc/SS	55	78	165	82	20/ 24	235	209



Face plate assemble to lock case which can choose the fixed bolts being visible or hidden.

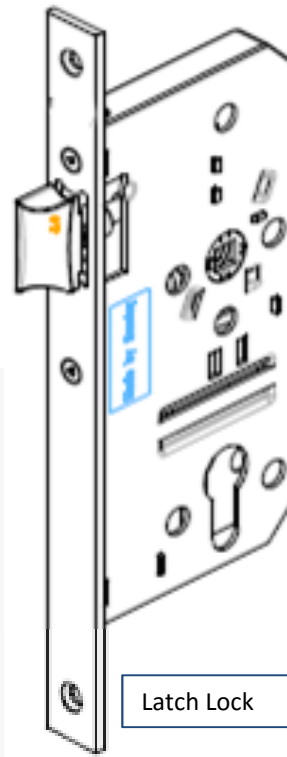


Sash Lock

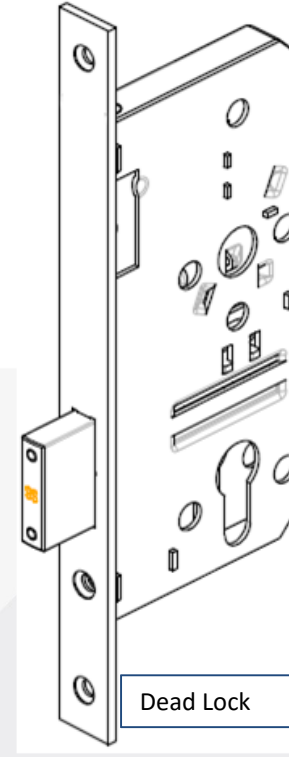
Sash Lock

Curved and semi-symmetry strike.

Face Plate can choose square or round end, 20 or 24 mm width



Latch Lock



Dead Lock



WC/ Privacy Lock

Material

- Case – Galvanized, SECC
- Latch – Zinc or Stainless Steel, Stainless Steel for CE and Fire certified lock
- Faceplate & Strike plate– Stainless Steel, available for SS304 or SS430
- Bolt – Zinc or Stainless Steel, Stainless Steel for CE and Fire certified lock